

Wyaralong Dam



The Wyaralong Dam is an integral part of the Queensland Government's plan to ensure a safe and sustainable water supply for South East Queensland's growing population.

The Wyaralong Dam will work in conjunction with the Cedar Grove Weir and the Bromelton Offstream Storage to improve reliability of the Logan River Water Supply Scheme in drought conditions, help meet the Beaudesert area's growing demand for water from urban and industrial development, and provide additional supply for the South East Queensland Water Grid.

Due for completion by mid 2011, the Wyaralong Dam will supply 21,000 ML/a (when operated in conjunction with Cedar Grove Weir). The Wyaralong Dam is located on the Teviot Brook, approximately 14 kilometres northwest of Beaudesert in the Logan River Catchment.

For further information on construction of the Wyaralong Dam, visit the Project website www.wyaralongdam.com.au

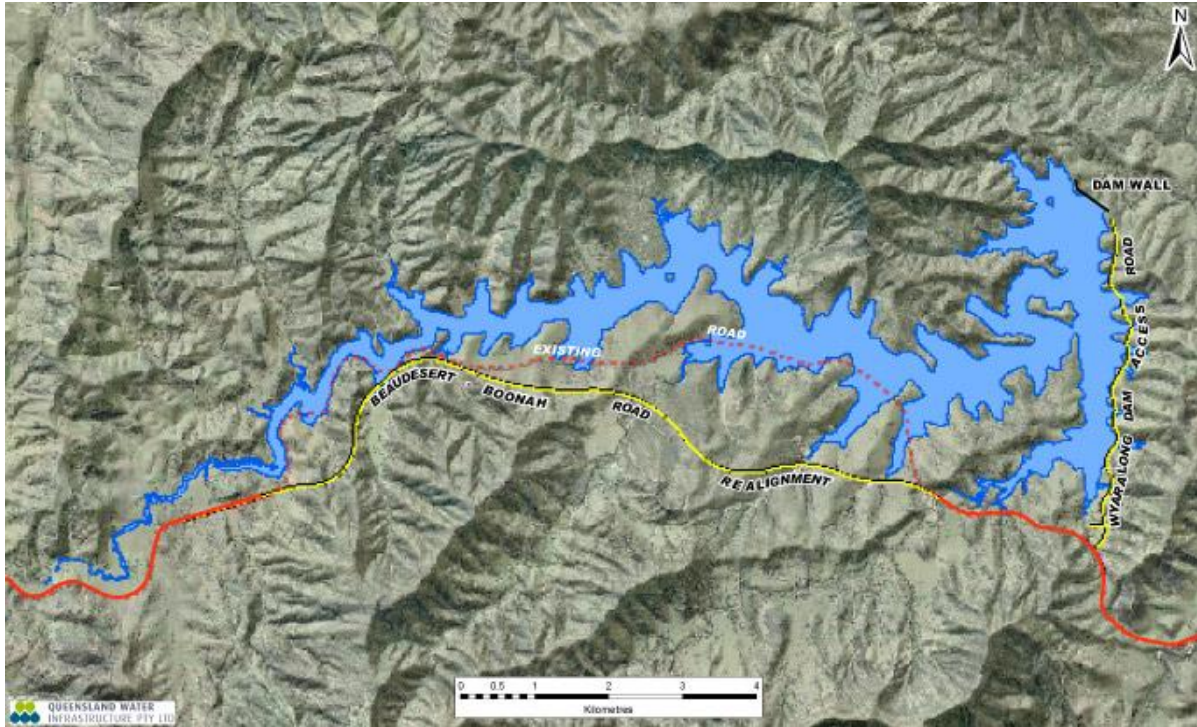
Seqwater is responsible for the critical components of catchment, collection, storage, treatment plants and water supply to our customers. We maintain the storages so there is sufficient water during dry years, to minimise impact on the environment, and maintain and improve the quality of the water.

We also manage flood events to minimize flood damage downstream from the dams.

Key Facts.

Anticipated annual yield (when operated with Cedar Grove Weir)	21,000 mega litres per year
Location	On Teviot Brook, 14km north west of Beaudesert
Water depth at dam wall	28 metres
Average depth (in river channel)	14 metres
Full supply area	1,230 hectares
Total capacity	103,000 mega litres
Total project cost	\$348 million
Properties affected	19
Road relocation	11.9 kilometres
Scheduled completion	By Mid 2011







SOURCE STORE TREAT SUPPLY

