

Seqwater -water for life

Seqwater is responsible for the catchment, storage and treatment of bulk water to the South East Queensland Water Grid.

On 1 July 2008 the water assets and around 350 people from fourteen different entities across South East Queensland merged to form Seqwater. Created as part of the Queensland Government's plan for Urban Water Reform, we are now the single largest treated and bulk water service provider.

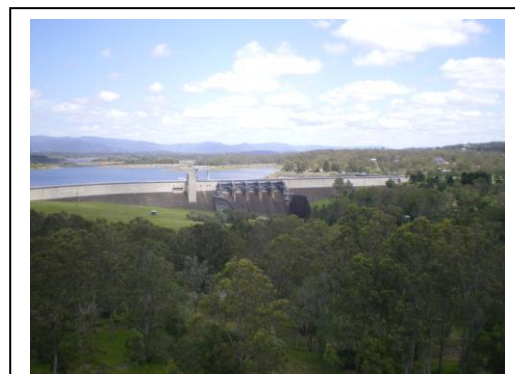
We own and operate physical assets worth more than an estimated \$1.8 billion – comprising 24 dams including North Pine, Wivenhoe and Somerset Dams, Hinze Dam on the Gold Coast and Baroon Pocket Dam on the Sunshine Coast; 46 water treatment plants and a range of related facilities and equipment across the region. We are also responsible for the management of many catchments that supply water to our dams. We do this in collaboration with many groups.

In addition, we also provide services to around 1,000 irrigator customers in the Upper Mary, Logan River, Warrill Valley, Central Lockyer, Lower Lockyer and Central Brisbane schemes.

'Water for Life' is our promise to the community to deliver secure and reliable water sources both now and into the future.



Wivenhoe Dam



NorthPine Dam

Our Assets

To the North:

- **Ewen Maddock Dam** near Landsborough
- **Baroon Pocket Dam** (also known as Lake Baroon) near Maleny
- Poona Dam, Cooloolabin Dam and Wappa Dam near Yandina
- **Lake McDonald** (also known as Six Mile Creek Dam) near Cooroy
- Cedar Pocket Dam and Borumba Dam west of Gympie
- **Sidling Creek Dam** (also known as Lake Kurwongbah) and **North Pine Dam** (also known as Lake Samsonvale) near Petrie
- **Lake MacDonald, Mary Valley – Borumba Downs, Kenilworth, Image Flat, Landers Shute, Maleny and Woodford WTPs on the Sunshine Coast.**
- **Banksia Beach and Woorim WTPs on Bribie Island**
- **Caboolture, Petrie, Daybro and North Pine WTPs north of Brisbane.**

To the West:

- **Gold Creek Dam, Enoggera Dam, Lake Manchester Dam**
- **Wivenhoe Dam** and **Somerset Dam** (also known as Lake Wivenhoe and Lake Somerset) in the Brisbane Valley.
- **Atkinson Dam** (known as Lake Atkinson), **Bill Gunn Dam** (known as Lake Dyer) near Laidley and the **Clarendon Dam** (known as Lake Clarendon) near Gatton in the Lockyer Valley.
- **Forest Lake, Algester, Chandler, Runcorn, Sunnybank WTPs in Brisbane's south**
- **Enoggera WTP, Mt Crosby East Bank and West Bank WTPs in Brisbane's west**
- **Jimna, Linville, Kilcoy, Somerset Dam (Recreation & Township), Esk and Lowood WTPs in the Brisbane Valley. Lower Lockyer – Atkinson WTP in the Lockyer Valley.**

To the South:

- **Leslie Harrison Dam** (also known as the Tingalpa Reservoir) near Capalaba.
- **Hinze Dam** (also known as Advancetown Lake) and **Little Nerang Dam**
- **Maroon Dam** near Beaudesert
- **Moogerah Dam** near Boonah
- **Capalaba WTP in Redlands, Amity Point, Point Lookout, Dunwich and North Stradbroke WTPs.**
- **South Maclean WTP in Logan**
- **Molendinar, Mudgeerba and Canungra WTPs on the Gold Coast and hinterland**
- **Beaudesert, Kooralbyn, Boonah-Kalbah, Logan-Maroon Dam, Waririll Valley – Moogerah Dam and Rathdowney WTPs in the Scenic Rim.**

Water Quality

Seqwater's dams, collect the annual water yield for south east Queensland. Collection and delivery of water involves the streams and catchment areas of south east Queensland.

A major objective of our management of the dams is to maintain and improve the quality of the water so that we can treat the water delivered without incurring excessive treatment costs.



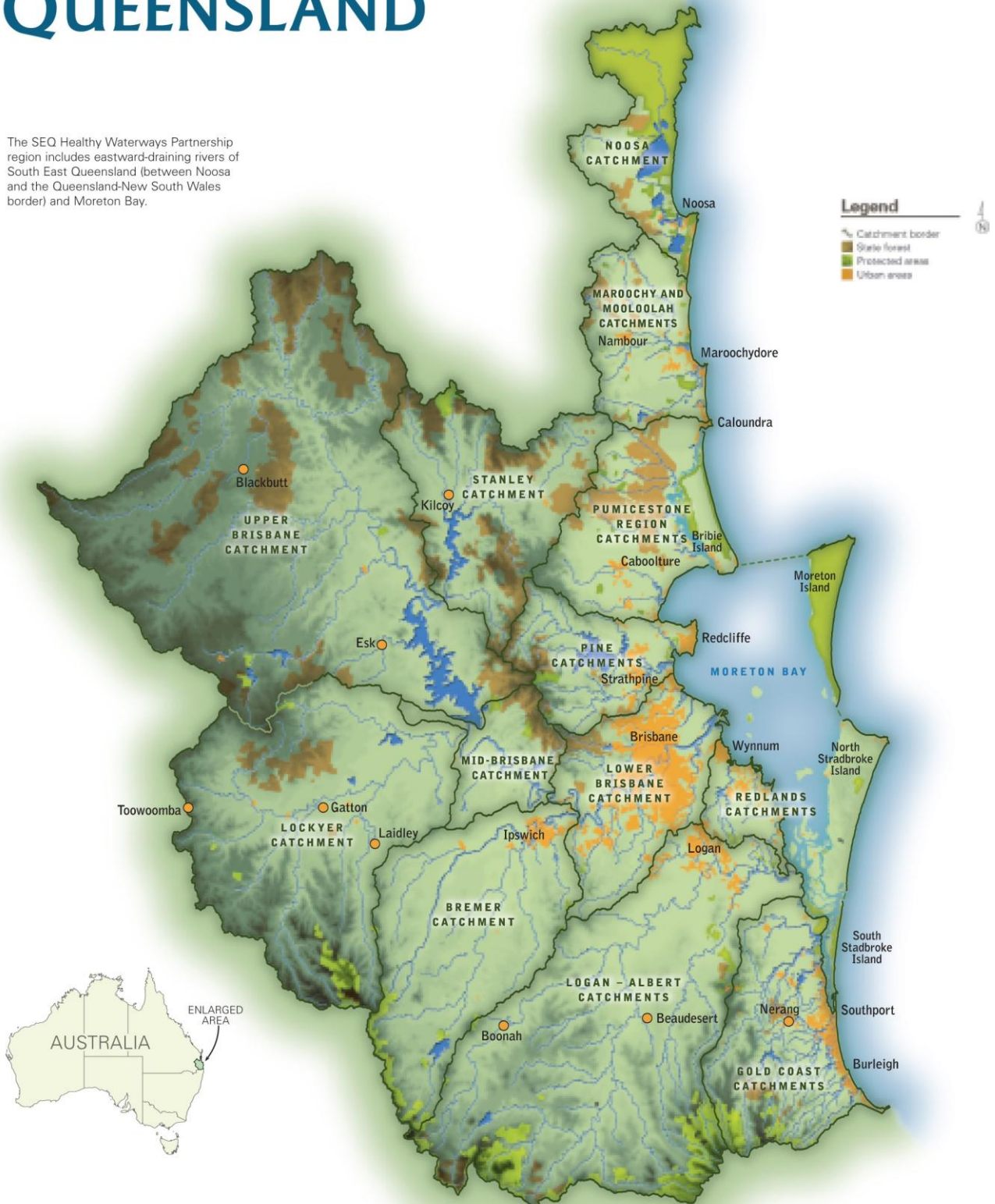
The catchments for the dams support active and growing communities plus important industrial and rural activities. This creates a challenge for Seqwater to manage the quality of water entering, and contained within the dams.

Seqwater is undertaking initiatives to manage water quality risks through interaction with landholders, catchment and local groups, State regulatory authorities and Local Governments. We are committed to working with these groups to understand and reduce the risks that may impact upon the quality of water.



CATCHMENTS OF SOUTH EAST QUEENSLAND

The SEQ Healthy Waterways Partnership region includes eastward-draining rivers of South East Queensland (between Noosa and the Queensland-New South Wales border) and Moreton Bay.



For further information about the SEQ Healthy Waterways Partnership telephone (07) 3402 4206 or visit: www.healthywaterways.org

