

The South East Qld Water Grid Northern InterConnector Stage 1 and 2

The Northern Pipeline Interconnector is part of the South East Queensland Water Grid. When complete, it will be able to transfer up to 65 megalitres of water per day from the Sunshine Coast to areas of need in South East Queensland. The pipeline is being developed in two stages and will link existing and potential future water sources throughout the Sunshine Coast.

Overview

Construction of the stage 1 pipeline was completed on 31 December 2008 and is operating as part of the water grid. The regulated completion date for stage 2 is 31 December 2011. Stage 1 of the pipeline connects Lander's Shute Water Treatment Plant to the Morayfield reservoirs, where it links with the Caboolture and Brisbane water network. Stage 1 transfers unused water from existing allocations, under the interim Resource Operations Licence for the Baroon Pocket Water Supply Scheme, from the Landers Shute water treatment facility near Eudlo on the Sunshine Coast. This does not involve any changes to the existing water allocations from Baroon Pocket Dam or other sources within the Mary River catchment.

Stage 1 of the pipeline was delivered by LinkWater Projects, a wholly government-owned company. LinkWater Projects engaged the Southern Regional Water Pipeline Alliance to construct stage 1. The alliance was made up of KBR, McConnell Dowell and Abigroup.

The pipeline is being developed in two stages and will link potential future water sources throughout the Sunshine Coast. The completed pipeline will provide reverse flow capacity to ensure that water can flow in either direction depending on future demand needs. Construction of stage 1 was completed in December 2008 and extends from the Morayfield reservoirs to the Landers Shute Water Treatment Plant. Stage 2 is currently under construction and expected to be completed by 31 December 2011.

The Northern Pipeline Interconnector - Stage 2 will connect from the stage 1 termination point near Lander's Shute Water Treatment Plant (Eudlo) and extend to the Noosa Water Treatment Plant (Lake Macdonald) near Cooroy. Once the pipeline is operational, it will contribute up to 18 megalitres per day (6500 megalitres per annum) to the 65 megalitres per day that NPI is targeted to deliver to Brisbane. The 18 megalitres per day is available from an existing water entitlement - as authorised under the Water Resource (Mary Basin) Plan 2006, within the Upper Mary River Water Supply Scheme.

The project consists of approximately 48 kilometres of bi-directional pipeline and associated facilities. The project has a footprint of approximately 148 hectares. This includes a 30 metre- wide pipeline corridor, four pump stations, one balance tank and two water quality boosting facilities. Stage 2 of the pipeline is being delivered by LinkWater Projects, a wholly government-owned company. LinkWater Projects has engaged Northern Network Alliance to construct stage 2 of the pipeline.

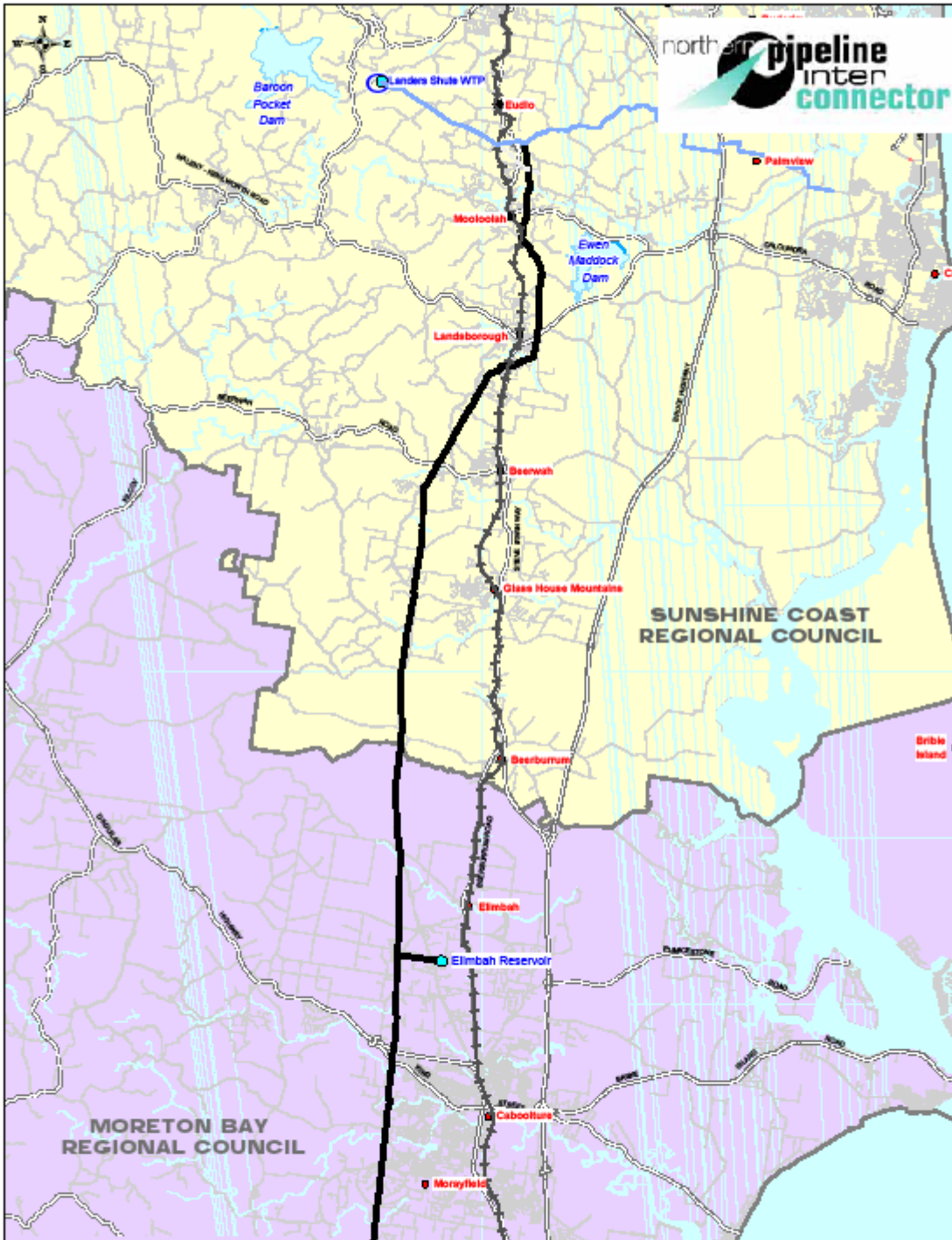
Interesting facts

- Almost all the Northern Pipeline Interconnector will be buried approximately one metre underground.
- NPI stage 2 is expected to generate 650 jobs with an estimated 60% of employees to be hired locally.

The pipeline route has been selected to minimise impacts on the environment.

Project Statistics

- A bulk water carrier, laid mostly underground and designed to move potable water for commercial and residential use.
- Able to transport up to 65 megalitres per day.
- Gravity fed - requiring no pump stations or balance tanks.
- Built to accommodate future reverse-flow capacity.
- 57 road crossings including tunnel bores under D'aguilar Highway and Steve Irwin Way and two thrust bores under Steve Irwin Way and Mooloolah Connection Road.
- 17 waterways, including three bridge crossings of the Caboolture, Warrahba and Mooloolah rivers.
- Employed a total of 370 people during construction.
- 292 directly affected private landowners.
- Crosses four local council divisions within Sunshine Coast and Moreton Bay Regional Councils* plus two state and two federal electorates.
- \$315 million project.
- 60,000 trees planted.



LinkWater Assets and Projects Current and future

Version 5

