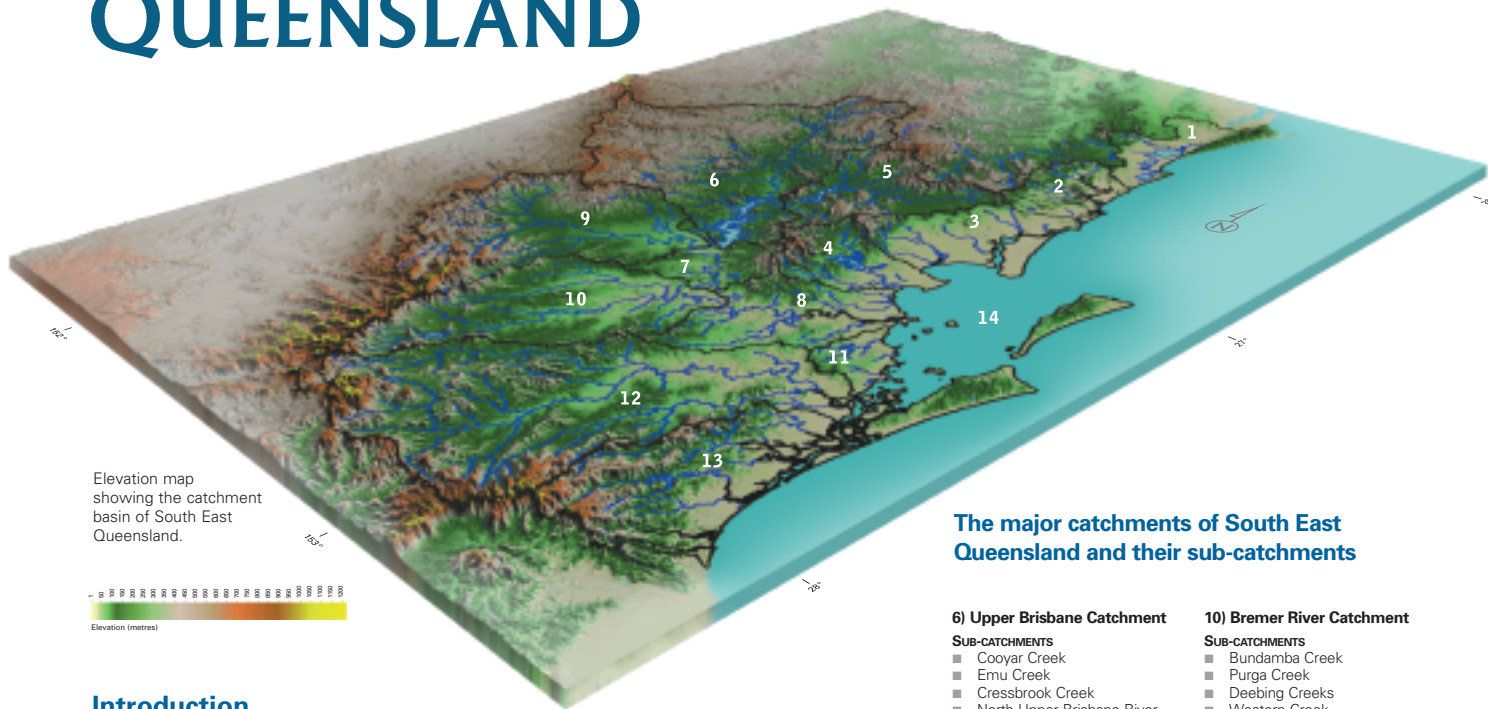
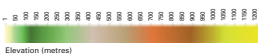




CATCHMENTS OF SOUTH EAST QUEENSLAND



Elevation map showing the catchment basin of South East Queensland.



The major catchments of South East Queensland and their sub-catchments

Introduction

South East Queensland (SEQ) is a diverse mosaic of mountain ranges, hills, valleys, rivers, lakes, floodplains, beaches, bays and islands, from the Gold Coast south, north to Noosa and west to Toowoomba. These environments support a rapidly growing population of 2.7 million people and many rich and varied habitats that are home to a great diversity of plants and animals.

South East Queensland Catchment Facts

A catchment is an area of land surrounded by natural high features such as hills and mountains from which all runoff water flows to a low point through a network of waterways. Under the influence of gravity, rain falling on the land flows from the top of the catchment through small gullies and streams, into larger rivers and then to the bay.

In the South East Queensland catchment, the high points are the hills and mountains of the Great Dividing Range that circles the outer edges of the region. The total catchment area is 22 672 square km including the 1523 square km of Moreton Bay. This whole catchment area is divided into major catchments, each with their own sub-catchments.

Many of these waterways contribute to the Moreton Bay Marine Park, which stretches from Southport up to Caloundra, encompassing some tidal rivers and extending east three nautical miles offshore.

1) Noosa River Catchment

SUB-CATCHMENTS

- Teewah Creek
- Upper Noosa River
- Lower Noosa River
- Kin Kin Creek / Cootharaba
- Cooribah
- Noosa River Wetlands
- Weyba
- Beaches & Coastal Waters

2) Maroochy Catchment

SUB-CATCHMENTS

- Maroochy River Estuary
- North Maroochy River & South Maroochy River
- Coolool Creek
- Yandina Creek
- Petrie Creek
- Yandina Creek
- Paynter Creek
- Eudlo Creek
- Stumer Creek
- Beaches & Coastal Waters

3) Pumicestone Region Catchment

SUB-CATCHMENTS

- Bells Creek
- Mellum Creek
- Elimbah Creek
- Caboolture River
- Burpengary Creek
- Bribie Island
- Beaches & Bay Waters

4) Pine Rivers Catchment

SUB-CATCHMENTS

- North Pine River
- Kurwongbah
- South Pine River
- Saltwater Creek
- Redcliffe Peninsular
- Beaches & Bay Waters

5) Somerset Stanley River Catchment

SUB-CATCHMENTS

- Eastern Stanley River
- Western Stanley River
- Southern Stanley River

6) Upper Brisbane Catchment

SUB-CATCHMENTS

- Cooyar Creek
- Emu Creek
- Cressbrook Creek
- North Upper Brisbane River
- South Upper Brisbane River
- Lake Wivenhoe

7) Mid-Brisbane River Catchment

SUB-CATCHMENTS

- Spring Creek
- England Creek
- Black Snake Creek
- Branch Creek
- Lake Manchester
- Borallon / Mt Crosby
- Mid-Brisbane River

8) Lower Brisbane Catchment

SUB-CATCHMENTS

- Brisbane River Estuary
- Breakfast Creek
- Bulimba, Slacks & Scrubby Creek
- Cabbage Tree Creek
- Cubberla, Sandy, Toowong and Witton Creeks
- Jindalee and Mt Ommanney Creeks
- Kedron Brook and Boggy, Jubilee and Crab Creeks
- Moggill Creek
- Norman and Perrin Creeks
- Nundah and Nudgee Creeks
- Oxley Creek
- Pullen Pullen, Bellbowrie, Farm Kholo and Little Ugly Creeks
- Wolston and Woogaroo Creeks
- Six Mile, Goodna and Sandy Creeks

9) Lockyer Creek Catchment

SUB-CATCHMENTS

- Murphys Creek
- Gatton Creek
- Sandy Creek
- Sandy Creek – Grantham
- Flagstone Creek
- Ma Ma Creek
- Tenthill Creek
- Lake Clarendon
- Sandy Creek – Forest Hill
- Laidley Creek
- Lake Dyer
- Woolshed and Plain Creeks
- Buaraba Creek
- Lake Atkinson

10) Bremer River Catchment

SUB-CATCHMENTS

- Bundamba Creek
- Purga Creek
- Deebing Creeks
- Western Creek
- Warrill Creek
- Reynolds Creek
- Bremer River

11) Redland Catchments

SUB-CATCHMENTS

- Lota and Wynnum Creeks
- Tingalpa and Coolwypin Creeks
- Tarradarrapin Creek
- Hilliards Creek
- Eprapah Creek
- Moogurrapum Creek
- Cleveland and Thornlands
- Coochiemudlo Island
- Russel Island
- Karragarra Island
- Lamb Island
- Beaches & Bay Waters

12) Logan Albert Catchment

SUB-CATCHMENTS

- Logan River
- Albert River
- Teviot Brook

13) Gold Coast Catchments

SUB-CATCHMENTS

- Pimpama River
- Coomera River
- Coombabah
- South Stradbroke Island
- Biggera Creek
- Loders Creek
- Nerang River
- Mudgeeraba Creek
- Tallebudgera Creek
- Currumbin Creek
- Flat Rock Creek
- Coolangatta Creek
- Beaches & Coastal Waters

14) Moreton Bay

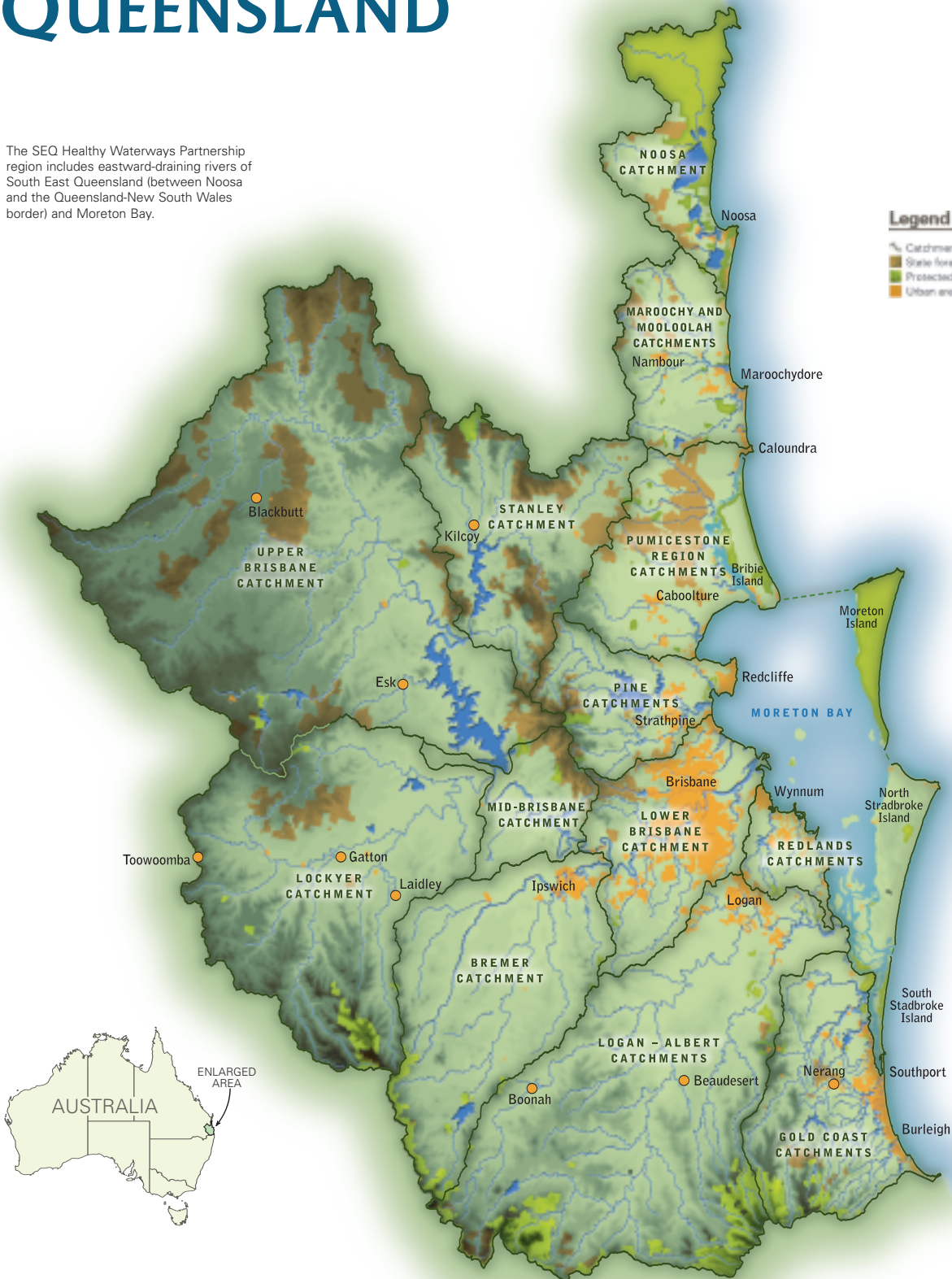
SUB-CATCHMENTS

- Bramble Bay
- Waterloo Bay
- Eastern Moreton Bay
- Southern Moreton Bay



CATCHMENTS OF SOUTH EAST QUEENSLAND

The SEQ Healthy Waterways Partnership region includes eastward-draining rivers of South East Queensland (between Noosa and the Queensland-New South Wales border) and Moreton Bay.



For further information about the SEQ Healthy Waterways Partnership telephone (07) 3402 4206 or visit: www.healthywaterways.org